



Colour Manager

- High-speed multifunctional A3 system for enhanced quality colour document output
- Large paper capacity for increased productivity
- Security enhanced technology to protect confidential data
- Intuitive operation via the large user interface to optimise workflows
- Equipped with energy saving features for environmental-friendly operation



e-STUDIO5560c
e-STUDIO6560c
e-STUDIO6570c



SAP® Printer Vendor Solution



Ready for enhanced performance

The e-STUDIO5560c/6560c/6570c have been designed to support businesses which need intelligent document management, high-quality colour output and impressive productivity.

The e-STUDIO6570c series offers state-of-the-art document output for demanding workflows and supports departments and companies of any size. The A3 colour systems offer print, scan and copy functionality as standard with the option of fax.

Remarkable image quality, with crystal clear graphics and brilliant colours will let you create impressive documents - whether as hard copy or electronic file.

But there is more: The powerful Toshiba e-BRIDGE technology enhances workgroups, departments and companies with new applications that go beyond the scope of traditional document handling. Automated processing, archiving and storage as well as search and retrieval of any document within a network is supported as well.

Easy to integrate into an existing network the e-STUDIO6570c series offers advanced administration functions which will allow simple and transparent control of access, status and costs.



e-STUDIO5560c/6560c/6570c

Versatile productivity

Demanding print jobs require reliable systems which are capable of high-quality document output regardless of volume or complexity.

Whichever Toshiba system you choose - all three models of the e-STUDIO6570c series offers you impressive document output. At a print speed of up to 65 ppm in colour and up to 75 ppm in monochrome these systems leave nothing to be desired.

A wide range of paper formats - including banner paper up to 1,200 mm - and paper weights from 64 gsm to 300 gsm -

ensure that more than just standard office documents can be printed, scanned and copied.

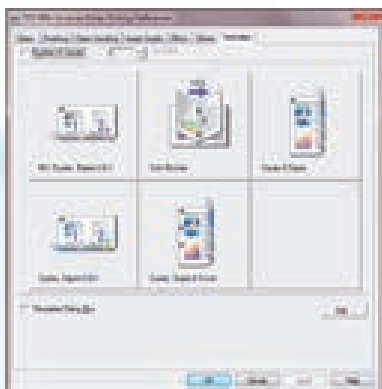
The maximum paper capacity of 6,000 sheets is sufficient for even high-volume print jobs. And if needed, paper and toner can be refilled without interrupting the print job - a feature which will save you valuable time - especially when under deadline pressure.

To give your documents the finishing touch, the colour systems come with a wide range of options. Whether hole punching, multi-positioning stapling or booklet printing with saddle-stitching, the finishing possibilities leave plenty of room for your creativity.



Sophisticated technology paired with intuitive handling

Toshiba's colour systems contain the latest high performance technology, coupled with a feature rich user experience that offers a complete package of intuitive efficiency.



Printer driver with one-touch templates

Like all Toshiba products the e-STUDIO6570c series was created with your needs in mind. The best technology is of no help if operation is tedious and time-consuming.

Hence, Toshiba's human-centric approach allows the intuitive use of the system and ensures optimised usage right from the start.

A large colour LCD touch panel with its ergonomic user interface gives full and instant access to all functions. User specific one-touch templates, enhanced preview options and sophisticated filing possibilities are available at a glance.

The Universal Printer Driver, common to all e-BRIDGE driven systems, simplifies document

handling even more. It lets users apply predefined settings to their print jobs from any application on their PC. This ensures documents are created the way they should be - everytime on any e-BRIDGE system in the network.

Additionally, the Universal Printer Driver supports Tandem Printing - a useful feature, which allows you to split large print jobs and send them to multiple e-STUDIO systems with just a few clicks.





The new e-STUDIO6570c series is open for integration. So you can flexibly add software solutions that suit your needs - whenever you want. Whether pervasive connectivity to your company's software, convincing document management to further improved security or cost-cutting efficiency and clever customisation, Toshiba has a large range of solutions you can choose from.

Tailor-made solutions for optimised performance

Each company has its unique workflows and requirements. We understand these and offer a large range of solutions, which optimise your document workflow.

The e-BRIDGE controller technology from Toshiba is the high-tech core of the new e-STUDIO colour system. It's the functional foundation for fast and fascinating document processing and highly productive applications.

The controller also allows the easy integration with software solutions. So whether you want to extend your connectivity, want to create a smart document workflow or simply want to make your MFP

available for mobile printing, with e-BRIDGE you have the flexibility to do so.

Toshiba also offers a large range of solutions you can choose from. The highly sophisticated OCR software, e-BRIDGE Re-Rite, is just as much part of our product

portfolio as is our cost-cutting Energy Manager For Office, which will allow you to optimise the power consumption of all compatible PCs and MFPs in your network.





Ultimate data security

Security is a growing concern for companies of all sizes. Toshiba has innovative methods of protecting valuable data in order to ensure that what is yours stays yours.

With MFPs and printers being able to store data, they have become an integral part of business networks and thus are a critical point of vulnerability. Sensitive data and business-critical information can easily be accessed unauthorised if security measures are not in place.

Toshiba offers various possibilities of securing your data and documents to help your business meet the increasing security challenges of today's world.

One example is the innovative Toshiba Secure HDD with which the colour systems are equipped with. The 256-bit AES encryption happens in near real-time, without loss of performance and the encryption key.

Furthermore, the Toshiba Secure HDD knows which device it has been built into. If removed without authorisation and connected to a different MFP or PC the encryption key, which is stored on the HDD itself, will be deleted - guaranteeing that your data is safe.

SE SECURITY ENHANCED
Powerful Protection for Sensitive Data

Toshiba Security

Access Security

- » Network Authentication
- » Role Based Access
- » Usage Limitations
- » Card Authentication¹⁾
- » Department Codes

Document Security

- » SecurePDF
- » Private Print
- » HardCopy Security

Device Security

- » Secure HDD
- » SSL
- » IPv6
- » IP Filtering
- » SMB Signing
- » IPSec¹⁾
- » Data Overwrite Enabler¹⁾

¹⁾ Optional

Because we care

Caring for the environment and its resources is part of Toshiba's tradition – starting with the choice of materials all the way to recycling issues. The colour systems of the e-STUDIO6570c series comply with leading international environmental standards. Their operation is extremely energy-efficient, which not only saves valuable resources, but also costs. Furthermore, the new colour systems operate pleasantly silent without compromising on excellent performance.

Materials have been tested for environmental friendliness and can be recycled hassle-free. Where possible, components for the devices are made of recycled plastic or are biomass-derived.



Configuration



System Options

- | | | |
|-----------------------|--------------------------|--------------------------|
| ■ Fax Board | ■ Data Overwrite Enabler | ■ Unicode Font Enabler |
| ■ e-BRIDGE ID-Gate | ■ IPsec Enabler | ■ Hard Copy Security Kit |
| ■ Wireless LAN Module | ■ Meta Scan Enabler | ■ e-BRIDGE Re-Rite |

**e-STUDIO5560c****e-STUDIO6560c****e-STUDIO6570c**

| | |
|------------------------------|---|
| General | <p>Print & Copy Speed Colour: 55/65/65 ppm (A4), 27/30/30 ppm (A3) Monochrome: 55/65/75 ppm (A4), 27/30/37 ppm (A3)</p> <p>Warm-up Time Approx. 70 seconds from low-power mode</p> <p>Paper Size & Weight Cassettes: A5R-320 x 460 mm, 64-256 gsm Tandem LCF¹⁾: A4, 64-256 gsm Bypass: A6R-330 x 483 mm, 64-300 gsm, banner paper (up to 313 x 1,200 mm, 90-163 gsm)</p> <p>Paper Capacity 4 x 540 sheets (Cassettes) or 2 x 540 sheets (Cassettes) + 2,320 sheets (Tandem LCF)¹⁾, 100 sheets (Bypass) Maximum: 6,000 sheets A5R-320 x 460 mm, 64-256 gsm</p> <p>Automatic Duplex Controller Type Toshiba e-BRIDGE</p> <p>Memory Toshiba Secure HDD 320 GB³⁾, 2.0 GB RAM</p> <p>Interface 100/100/1000 BaseT (incl. IPv6), High-Speed USB 2.0, WLAN²⁾ (IEEE802.11b/g/n)</p> <p>Dimensions & Weight 980 x 698 x 1,540 mm (W x D x H), ~ 244 kg</p> |
| Print | <p>Resolution 600 x 600 dpi, 8 bit per colour channel 1,200 x 1,200 dpi (2 bit, PostScript driver only)</p> <p>Page Description Languages XPS, PCL6 and PostScript 3 compatible</p> <p>Supported Systems Windows 8/7/Vista/Server 2008/Server 2003 (32/64 bit), Windows Server 2012 R2/Server 2008 R2 (64 bit), Mac OS X 10.4.11-10.9, Linux/UNIX, Novel Netware (NDPS), Citrix, SAP, AS/400</p> <p>Colour Modes Auto-Colour (ACS), Colour, Twin Colour, Monochrome</p> <p>Colour Settings ICC profiles management, Brightness, Saturation, Contrast, Colour Balance</p> <p>Print Functions Universal Driver, Driver templates, Driver plug-ins²⁾, Hold print, Print from USB, Tandem printing, AirPrint</p> |
| Scan | <p>Resolution Max. 600 x 600 dpi, 8 bit per colour channel</p> <p>Scan Speed Colour & Monochrome: 77 ppm (300 dpi)</p> <p>Document Feeder Max. 100 sheets, A5R-A3, 35-209 gsm</p> <p>Scan Modes Auto-Colour (ACS), Colour, Greyscale, Monochrome</p> <p>File Formats JPEG, Multi/Single Page TIFF/XPS/PDF, Secure PDF, Slim PDF, Searchable PDF²⁾ (and other editable formats like DOCX, XLSX, RTF, TXT, PDF/A)²⁾</p> <p>Scan Functions WS Scan (pull/push), Scan to USB, Scan to E-Mail, Scan to File (SMB, FTP, FTPS, IPX/SPX, local), Meta Scan²⁾, Scan to Box (e-Filing), WIA, TWAIN</p> |
| Copy | <p>Resolution Scan: 600 x 600 dpi, 10 bit per colour channel Print: 600 x 600 dpi, 8 bit per colour channel</p> <p>First Copy Output Time 2,400 x 600 dpi, Monochrome with smoothing</p> <p>Colour Approx. 6.5 seconds</p> <p>Monochrome Approx. 5.3/5.3/4.6 seconds</p> <p>Zoom 25-400% (platen), 25-200% (RADF)</p> <p>Copy Modes Text, Text/Photo, Photo, Printed Image, Map, Image Smoothing</p> <p>Colour Modes Auto-Colour (ACS), Full Colour, Twin Colour, Mono Colour, Monochrome</p> <p>Colour Settings Hue, Saturation, Colour Balance, RGB Adjustment, 5 One-touch modes</p> |
| Fax²⁾ | <p>Communication Super G3, G3 - (opt. 2nd line), Internet Fax T.37</p> <p>Transmission Speed Approx. 3 seconds per page</p> <p>Compression JBIG, MMR, MR, MH</p> <p>Network-Fax Driver for Windows 8/7/Vista (32/64 bit), Server 2012 R2/Server 2008 R2 (64 bit)</p> <p>Incoming Fax Routing To shared folders (SMB, FTP, IPX/SPX), E-mail, e-Filing</p> |
| System & Security | <p>Device Management e-BRIDGE Fleet Management System²⁾, TopAccess for remote administration and configuration</p> <p>System Features e-Filing document server for secure storage, document distribution and Print-on-Demand (1 public box, 200 user boxes), 12,060 One-touch Templates for storage of personalised settings or workflows, Scan/Fax preview, RIP-while-Print, e-BRIDGE Open Platform²⁾, Embedded Web Browser, Job Skip</p> <p>Accounting & Security Role Based Access, LDAP support, 1,000 department codes & 10,000 user codes, card reader²⁾, private print, standard data encryption with Toshiba Secure HDD, Data Overwrite Enabler²⁾, IP and MAC address filter, port filter, support of SSL and IPsec²⁾ protocols, IEEE802.1x support, IEEE2600.1 compliant²⁾, Scan to secure PDF</p> |

OPTIONS**MULTI-STAPLING FINISHER – MJ-1103**

2 trays, 3,250-sheet capacity
50-sheet multi-position stapling
A5R-A3, 64-105 gsm (stapling mode)
617 x 603 x 1,085 mm (W x D x H), ~ 40 kg

SADDLE-STITCH FINISHER – MJ-1104

2 trays, 3,250-sheet capacity
50-sheet multi-position stapling
5-sheet center-folding
Saddle-stitched booklets of up to 60 pages
A5R-A3, 64-105 gsm (stapling mode)
617 x 603 x 1,085 mm (W x D x H), ~ 70 kg

HOLE PUNCH UNIT – MJ-6102

Option for Finisher MJ-1103/MJ-1104
Available in 2 holes (E) and 4 holes (F)
112 x 573 x 323 mm (W x D x H), ~ 7 kg

LARGE CAPACITY FEEDER – MP-2501A

2,500-sheet capacity, A4, 64-256 gsm
360 x 552 x 542 mm (W x D x H), ~ 29 kg

OTHER OPTIONS

SIDE EXIT TRAY – KA-6550-ET
HDD 320 GB³⁾ (FIPS 140-2 STD) – GE-1230
FAX BOARD – GD-1270EU-FN
WIRELESS LAN MODULE – GN-1060
e-BRIDGE ID-GATE – TWN3/4XX
DATA OVERWRITE ENABLER – GP-1070
IPsec ENABLER – GP-1080
HARD COPY SECURITY KIT – GP-1190A
META SCAN ENABLER – GS-1010
UNICODE FONT ENABLER – GS-1007
e-BRIDGE Re-Rite – GB-1280

- ¹⁾ e-STUDIO5560c tandem LCF version only
²⁾ Optional
³⁾ 1 GB = 1 billion bytes; the actual formatted capacity is less. Available capacity will also be less if software applications are pre-installed.

Productivity and paper specifications are related to a paper size of A4 and a paper weight of 80 gsm if not otherwise mentioned.



INSIGHT
 Insight Systems Ltd
 w: www.insightsystems.co.uk
 e: sales@insightsystems.co.uk
 t: 01732 880600

**TOSHIBA TEC UK
IMAGING SYSTEMS LTD**

ABBEY CLOISTERS, ABBEY GREEN,
CHERTSEY, SURREY KT16 8RB
TEL 0843 2244944 FAX 0843 3512024
WWW.TOSHIBATEC.CO.UK

Follow us on  @ToshibaTEC_UK



Jav.63994.0314

TOSHIBA
Leading Innovation >>>

6BY0COP1594

This Class 1 laser product complies with IEC60825-1. Technical data is subject to change without prior notice. All company and/or product names are trademarks and/or registered trademarks of their respective manufacturers in their markets and/or countries. We are constantly making efforts to deliver the latest status of data to our partners. Specifications for some models may change in the time between the production and the release of this documentation. Productivity and paper specifications are related to a paper size of A4 and a paper weight of 80 gsm if not otherwise mentioned. Copyright © 2014 TOSHIBA TEC. BR6570cGBEMD1403