

Efficient and Cost Effective Enterprise Printing

Solutions for Enterprise Printing



INSIGHT

Insight Systems Ltd

w: www.insightsystems.co.uk
e: sales@insightsystems.co.uk
t: 01732 880600

Enterprise Printing at its Best



When it comes to enterprise printing, support for multi-vendor system environments is a key priority. As a result, the maximised use of Ricoh Aficio™ multifunctional products (MFPs) and laser printers with multiple paper trays and finishing options is an immediate demand. That is exactly what Ricoh's enterprise printing solutions provide you with. In addition, being able to print a variety of source data such as documents with barcodes and OCR fonts optimises logistics, production and financial management in Enterprise Resource Planning (ERP) environments. Ricoh's full solution line-up allows you to optimally make use of every feature your Aficio™ MFP or laser printer has to offer and integrate them seamlessly in your enterprise environment. Implementing an effective network printing strategy will help you streamline production processes, shorten turnaround times and lower operational costs. A solid return on investment guaranteed.



For Seamless Integration with Enterprise Systems

The ultimate solution for mid sized and large workgroups? Ricoh's SAP® R/3® Custom Device Types, IBM®'s HPT Support and IPDS Enabler for Aficio™ Series. Whether you print in an SAP® R/3® or IBM® environment, Ricoh's enterprise printing solutions allow you to use your MFP and laser printer for different source data.

SAP® R/3® Custom Device Type

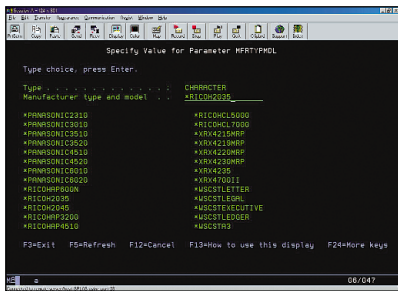
SAP® R/3® Custom Device Type is a key SAP® R/3® object to realise printing in SAP® R/3® environments and provides users with the additional value of automatic paper handling with paper tray selection and switching, output bin selection, duplex, stapling and hole punching. Users can maximise their efficiency when printing heavy volumes of mission-critical paperwork, including invoices, shipping documents, production instructions and other SAP® R/3® outputs with Aficio™ MFPs and laser printers.

IPDS Enabler for Aficio™ Series

Looking for IBM® host printing capabilities for your Aficio™ device? Ricoh has the ultimate solution for mid sized and large workgroups: the cost effective IPDS Enabler for Aficio™ series realises true add-on IPDS printing. With IPDS Enabler you can print IBM® host data such as transactional documents including bank statements, invoices etc. Once the software is installed on your Aficio™s, you can start receiving crucial printing data directly from an IBM® host. Mission critical printing for mainframe systems on Aficio™ devices is now possible. In addition, you can continue to benefit from your MFP as you have always done: for office document printing, copying, network scanning, network document storing... No need to buy a dedicated IPDS printer, simply use your Aficio™s for both IPDS, PS, PCL and PDF printing.

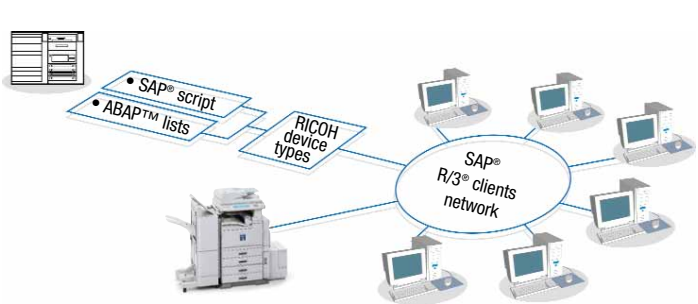
IBM®'s HPT Support for IBM® iSeries (AS/400)

IBM®'s HPT (Host Print Transform) realises a direct connection between iSeries (AS/400) servers and Ricoh's Aficio™ MFPs and laser printers. This eliminates the use of costly dedicated iSeries (AS/400) server printers. The advanced paper handling options such as tray selection and switching, output bin selection and duplex are fully integrated into IBM® environments. HP and IBM®'s WCOs (Workstation Customisation Objects) for Ricoh's Aficio™ MFPs and laser printers are included in OS/400 V5R3 and above. With the PTF (Program Temporary Fix) released from IBM®, HPT printing of Aficio™ devices is also supported with OS/400 V5R1 and V5R2.



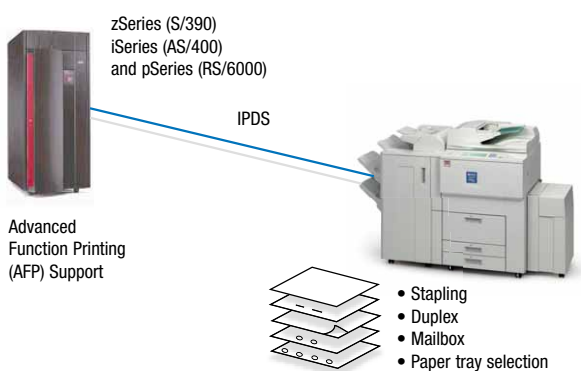
IBM®'s HPT (Host Print Transform) makes Ricoh's Aficio™ MFPs and laser printers truly plug and play for iSeries (AS/400).

SAP® R/3® Custom Device Type



As SAP® R/3® supports Custom Device Types, it allows users to fully optimise their MFP and printer usage.

IPDS Enabler for Aficio™ Series



Looking for IBM® host printing capabilities for your Aficio™ device? The cost effective IPDS Enabler for Aficio™ Series realises true add-on IPDS printing.

Print Mission-critical Documents with Barcodes and OCR Fonts

The Barcode and OCR Packages deliver an embedded barcode solution to the SAP® R/3® user and enables the full use of Ricoh multifunctional products' built-in printing capabilities, such as paper tray selection, double-sided printing, stapling and hole punching, in SAP® R/3® environments. This intelligent barcode solution optimises the return on investment by delivering a centralised management and full support for most of the barcodes in use today.

Barcode & OCR Package for SAP® R/3®

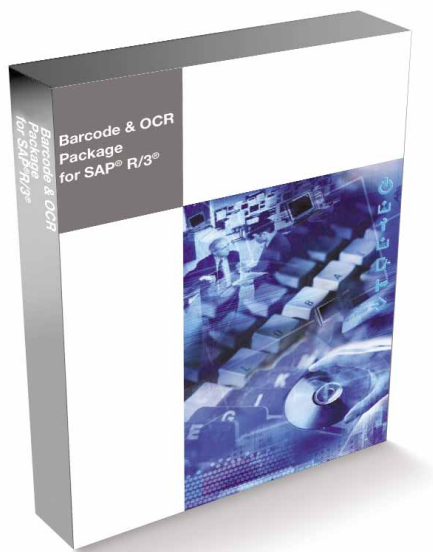
Ricoh's Barcode and OCR Package for SAP® R/3® is a true cost saver. It allows users to improve the documentation workflow with barcodes and OCR printing. Postage, packaging, manufacturing, warehousing and supply chain management are just a few important barcode applications. DIMM type, SD card type or hard disk type PCL font based packages include a broad range of barcodes. To ease users' programming of SAP® R/3® systems for barcodes, Ricoh's ABAP™/4 lists are bundled as standard.

Intelligent Barcode & OCR Package

Ricoh's Intelligent Barcode & OCR Package provides plug and play barcode printing with automatic check digit calculation and start/stop character insertion. The most common 2D barcode, PDF-417, is also supported with this version of Barcode & OCR Package. A configuration utility bundled in this package discovers Aficio™ devices in the network and fully controls its embedded barcode software. Thanks to the market standard PCL barcode command support, this package is fully compatible with SAP® Script barcode objects.

Easy Installation and Management

Installing, monitoring and maintaining the Intelligent Barcode & OCR Package printing solution can be done from one remote workstation for all MFPs that need barcode and OCR printing functionality. The results are great time savings and maximum efficiency. Once installed, the Intelligent Barcode & OCR Package becomes part of the internal architecture of a Ricoh Aficio™ MFP. As a result, a continuous check of every MFP for the latest version of the package is unnecessary. Instead, administrators can manage and monitor the license and usage status of the solution the same way as they manage the MFP itself.



The Intelligent Barcode and OCR Package delivers an embedded barcode solution to the SAP® R/3® user.



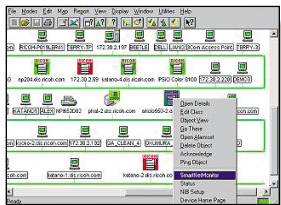
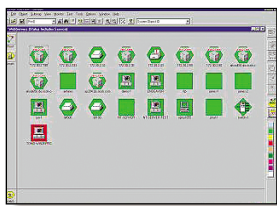
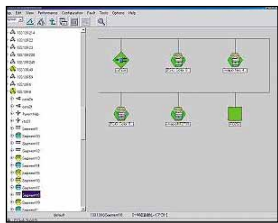
The Barcode and OCR Package enables Aficio™ devices to print barcodes and OCR fonts on a variety of applications.

For Optimal Use of All your Office Solutions

In large enterprise environments, seamless integration of printers and multifunctional products (MFPs) is often hard to implement.

In addition, many office devices are not optimally used and the benefits of the systems' functionalities are unknown.

To enable users to fully exploit the capabilities of their office equipment, Ricoh offers a variety of state-of-the-art solutions.



SmartDeviceMonitor™ Plug-in for CA Unicenter TNG, HP OpenView and IBM® Tivoli

Large organisations often have a service-driven solution to manage all their IT resources such as CA Unicenter TNG, HP OpenView and IBM® Tivoli Business Manager. These environments take over all hardware and software assets in the organisation, including network attached printers, copiers and MFPs. Often these devices or their specific capabilities are not or only partly recognised by the management environment. Ricoh's SmartDeviceMonitor™ plug-in architecture ensures an enhanced functionality for monitoring networked Aficio™ devices. These devices are recognised by the management environment and the user can easily identify them by the 'Ricoh' icon. Administrators can also access and control most features of their Aficio™ MFPs and laser printers.

NDPS Custom Gateway (Novell® Distributed Print Services)

The NDPS Custom Gateway configures Aficio™ MFPs and laser printers in such a way that they are seamlessly integrated with Novell®'s NDPS architecture. Users of the NDPS Custom Gateway will have less problems setting up their printers, while gaining the ability to drag-and-print documents.

Citrix® MetaFrame® and DeviceOption Utility for Citrix® MetaFrame®

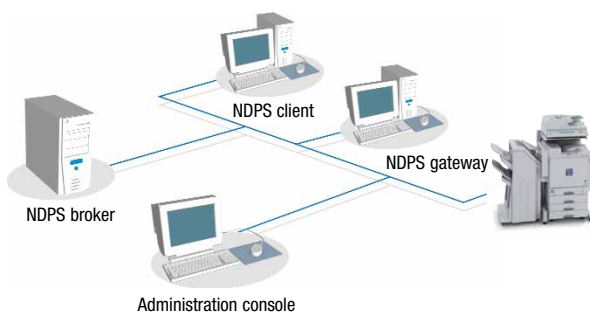
Citrix® MetaFrame® is access infrastructure software that enables users anywhere, on any device or connection, to securely and easily access applications running on central servers. Ricoh's Aficio™ MFPs and laser printers are fully compatible with Citrix® MetaFrame® for Windows®. In addition, Ricoh's unique DeviceOption Utility provides a solution for the Auto-Create Client Printer environment. It makes it easier for system administrators to set up printers for Aficio™ devices and allows users to utilise tray selections, mailbox output bin, duplex, stapling and hole punching in exactly the same way as in a Windows® environment.

UNIX/Linux Filter

In UNIX and Linux environments it can be hard to enable access to all the capabilities of a printing device. It usually demands a skilled UNIX systems engineer to write a script that sets up a printer so all its features can be accessed to print documents from UNIX/Linux applications. Ricoh Aficio™ MFPs and laser printers, however, support multiple UNIX and Linux system environments with an installer program. This enables UNIX or Linux users to fully utilise all the features of these devices without having to write scripts.

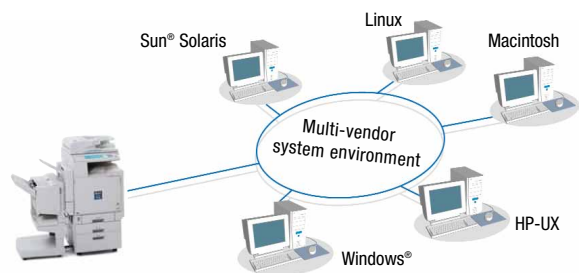
Thanks to the Ricoh plug-ins, IT-managers can optimise device usage, lower device costs and manage all systems centrally.

NDPS Custom Gateway



NDPS Custom Gateway guarantees seamless Novell® integration.

UNIX/Linux-ready



Ricoh's UNIX/Linux solution offers complete access to all print capabilities.



Solutions for Enterprise Printing

Specifications



Ricoh Barcode & OCR Package for SAP® R/3®

Supported environment:	SAP® R/3® release 4.6B or higher
Compatible environment:	SAP® R/3® release 3.x/4.x or higher
Printer language:	PCL5e/PCL5c
Supported barcodes:	UPC-A, UPC-A +2/5-digit add on, UPC-E UPC-E +2/5-digit add on, EAN-8, EAN-8 +2/5-digit add on, EAN-13 EAN-13 +2/5-digit add on, 2 of 5 interleaved (+CHK)/matrix/industrial Code 39/extended (+CHK), Code 93/extended (+CHK), Code 128 autoswitch/A,B,C, (AIM) Codabar, MSI Plessey (+CHK 10/and CHK 10) USPS POSTNET (5, 9 and 11 digits), USPS FIM/ZEBRA PDF417 (only for Intelligent Barcode & OCR Package)
Font size control:	Scalable length and width
OCR:	OCR A/B
ABAPT™/4 barcode conversion program and SAP® script sample program (only for Barcode & OCR Package for SAP® R/3®)	
Automatic check digit calculation, code conversion and start/stop characters (only for Intelligent Barcode & OCR Package)	



IPDS Enabler for Aficio™ Series

Supported host systems:

zSeries (S/390):

• OS/390 for MVS	PSF MVS	TCP/IP Enabled
zOS for MVS	release 2.1 or higher	

• OS/390 for VM	All PSF VM	TCP/IP Enabled
zOS for VM		

• OS/390 for VSE	All PSF VSE	TCP/IP Enabled
zOS for VSE		

iSeries (AS/400):

• OS/400 version 3.1 (including PTFs) or higher	PSF/400 version 3.1 (including PTFs) or higher	TCP/IP Enabled
---	--	----------------

pSeries (RS/6000):

• AIX	All PSF/6000 InfoPrint Manager	TCP/IP Enabled
-------	-----------------------------------	----------------

xSeries:

• OS/2	All PSF/2 InfoPrint Manager	TCP/IP Enabled
• Windows® NT 2000/XP	InfoPrint Manager	TCP/IP Enabled

Other systems:	Any other system supporting IPDS through TCP/IP over Ethernet
-----------------------	---

IPDS printer emulation:

- IBM®3130
- IBM®4028
- IBM®3812/3816
- IBM®3825/3827

IBM®'s HPT Support

Supported environments:	IBM® iSeries (AS/400) OS/400 V5R3 or above/V5R1 and V5R2 through PTF
Printer language:	PCL5e/PCL5c

NDPS Custom Gateway

Supported environments:	Netware® 5.1 (SP7 or higher) Netware® 6 (SP4 or higher) Netware® 6.5
-------------------------	--

CA Unicenter TNG, HP OpenView and IBM® Tivoli

Supported environments:	CA Unicenter TNG v2.4 or higher HP OpenView 6.10 or higher Tivoli NetView 6.0 or higher SmartDeviceMonitor™ for Admin v4.0.0.0 or higher
-------------------------	---

Advanced features:	Automatic device discovery Ricoh device icon with status colours SmartDeviceMonitor™ launch menu Access to the device embedded web server
--------------------	--

Aficio™ UNIX/Linux-ready

Supported environments:	Sun® Solaris 2.6/7/8/9 HP-UX 10.x/11.x/11iv1/11i RedHat® Linux 6.x/7.x/8.x/9.x/Enterprise SCO OpenServer 5.0.6 IBM® AIX v4.3/5L v5.1/v5.2
-------------------------	---

DeviceOption Utility for MetaFrame®

Advanced features:	Utilise option devices under MetaFrame® "Auto Create Client Printer" function
--------------------	--

Supported environments:

Windows® NT Server 4.0 Terminal Server Edition + SP6a:	<ul style="list-style-type: none"> • MetaFrame® 1.8 SP3/FR1+SP3 or SP4 • MetaFrame® XP™ 1.0 SP1 or SP2/FR1+SP2
Windows® 2000/Advanced Server Terminal Service + SP4:	<ul style="list-style-type: none"> • MetaFrame® 1.8 SP3/FR1+SP3 or SP4 • MetaFrame® XP™ 1.0 SP1 or SP2/FR1+SP2 or SP3/FR2+SP3/FR3
Windows® Server 2003:	<ul style="list-style-type: none"> • MetaFrame® XP™ 1.0 FR3

The following software applications can be downloaded at www.ricoh-support.com:

SAP® R/3® Custom Device Type, NDPS Custom Gateway, SmartDeviceMonitor™ plug-in for CA Unicenter TNG, HP OpenView and IBM® Tivoli, Aficio™ UNIX/Linux network installer and device options, DeviceOption Utility for Metaframe®.



ISO9001: 2000 certified
ISO14001 certified

Ricoh believes in conserving the earth's precious natural resources.

For supported models and the latest supported environments, please consult your local Ricoh supplier or the Ricoh website at www.ricoh-europe.com.

All brand and/or product names are trademarks of their respective owners. Specifications are subject to change without prior notice.

Copyright © 2006 Ricoh Europe B.V. All rights reserved. This brochure, its contents and/or layout may not be modified and/or adapted, copied in part or in whole and/or incorporated into other works without the prior written permission of Ricoh Europe B.V.

RICOH

For more information, please contact:



Insight Systems Ltd

w: www.insightsystems.co.uk
e: sales@insightsystems.co.uk
t: 01732 880600

RICOH EUROPE B.V.
P.O. Box 114, 1180 AC Amstelveen,
The Netherlands.
Phone: +31 (0)20-5474111
Fax: +31 (0)20-6418601

www.ricoh-europe.com

ENG/EUR - B0405N - 250114