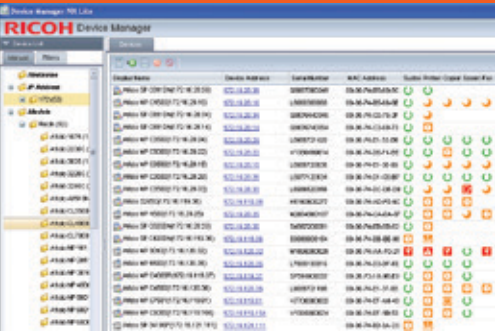
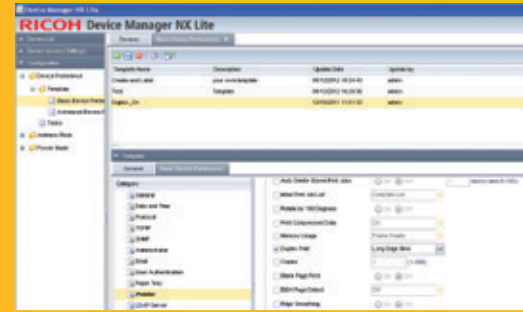


Device Manager NX Lite
Device Management Solution
See how easy fleet management can be

RICOH



control



automate

enhance



Ricoh Device Manager NX Lite

Seamless device management from the desktop.

Your print environment is evolving—keep pace with RICOH® Device Manager NX Lite. This innovative PC-based utility simplifies management and installation for networked Ricoh output devices and offers dynamic, centralized monitoring as well—for third party devices also. It leverages advanced capabilities found only in services-led platform Ricoh devices to optimize fleet efficiency, streamline workflow and reduce total cost of ownership. Network administrators can clone select device features for fast, convenient device configuration via an intuitive, user-friendly interface. Developed for small- to mid-size accounts, Device Manager NX Lite is a powerful, versatile utility that enables users to allocate existing resources more effectively and foster continuous improvement.

The Ricoh Device Manager NX Lite offers centralized administration for efficient networked output device management.



Intuitive Versatile Adaptable Proactive

Efficient Fleet Management

Device Manager NX Lite automates the discovery, monitoring and management of networked output devices from a centralized platform.

- Check status and activity for up to 250 Ricoh and non-Ricoh devices in your network fleet quickly using the intuitive interface.
- Establish standardized settings using Batch Configuration for Ricoh devices to standardize workflow and improve productivity.
- Perform compliance checks on Ricoh devices to identify devices with settings inconsistent with established policies.
- Create and categorize groups of devices based on selected criteria using manual grouping in addition to automatic grouping.

Advanced Capabilities

Access additional functionality when integrated with state-of-the-art services-led platform Ricoh devices for more flexible, convenient and cost-effective management.

- Streamline installations with easy-to-use device templates. Clone select settings on one services-led platform device and assign it to other like models.
- Set and adhere to standardized policies quickly and accurately with easy configuration of multiple network devices.
- Enable pop-up alert notifications for 19 specific device conditions.
- Detect Ricoh installed applications in Ricoh devices.

Proactive Maintenance and Response

A clear, detailed view of network output devices enables administrators to identify problems and to troubleshoot devices quickly for optimal convenience.

- Monitor a wide range of device properties that are essential to day-to-day productivity—including consumable levels, paper supplies and other service conditions—to ensure workflow is never compromised.
- Add, remove or drag and drop display columns to ensure device information is personalized and tailored to your desired format.

A Family of Device Management Solutions

Take advantage of a wide range of advanced tracking and management capabilities that can adapt seamlessly with your ever-changing fleet.

- Grow your fleet and manage it effectively as your business grows. The versatile, scalable Device Manager NX family will include a wide range of available fleet management solutions for virtually any sized organization.
- Accommodate a wide range of complementary services—including automated meter collection and Cloud-based fleet reports—with the addition of Ricoh's @Remote Intelligent Remote Management System.
- Review firmware levels and develop a strategic plan for upgrades.



Use device templates to quickly clone select settings on one Ricoh services-led platform device and assign it to other like models.

The screenshot shows a web-based interface with a table of device information. The table has columns for Device Name, Device Address, Serial Number, MAC Address, and Status. The data is as follows:

Device Name	Device Address	Serial Number	MAC Address	Status
ATX-MP-C5000-72.18.28.32	172.16.28.22	V130596014	00:00:14:00:F4:80	OK
ATX-MP-C5000-72.18.28.15	172.16.28.15	L20972208	00:00:14:01:28:99	OK
ATX-MP-C5000-72.18.28.29	172.16.28.29	L20712208	00:00:14:01:C8:8F	OK
ATX-MP-C5000-72.18.28.33	172.16.28.33	L20962208	00:00:14:0C:06:00	OK
ATX-MP-C4000P-72.18.118.37	172.16.118.37	S151600037	00:26:73:1A:96:80	OK
ATX-MP-C4000-72.18.128.30	172.16.128.30	L808621928	00:00:14:01:27:88	OK
ATX-MP-C7000-72.18.199.83	172.16.199.83	V173000000	00:00:14:0F:AA:40	OK
ATX-MP-C9000-72.18.199.94	172.16.199.94	V130600014	00:00:14:0F:1B:53	OK
ATX-MP-C9000-72.18.128.30	172.16.128.30	L808622826	00:00:14:0A:3F:8C	OK

Administrators can group devices manually or automatically for fast, easy identification and status updates.



Receive on-screen notifications of status changes for any device on the network.

Ricoh Device Manager NX Lite Specifications



Device Manager NX Lite is an innovative, intelligent network utility that offers centralized administration—including comprehensive management for services-led platform Ricoh devices and convenient monitoring for non-Ricoh devices—to enhance productivity and minimize labor for IT staff in mid-size accounts.

System Requirements

Recommended:

CPU: Core2Duo 2.0GHz
RAM: 2.0GB
HDD: 500MB free space
Internet access for activation

Client Operating System:

Windows® XP Home/Professional SP3 and later (32bit)
Windows® Vista Home Premium/Business/Enterprise/Ultimate SP2 and later (32bit)
Windows® 7 Home Premium/Professional/Enterprise/Ultimate SP1 and later (32bit/64bit)

Database:

Firebird® Internal DB included

Protocols:

SNMP v1/v2/v3
HTTP
HTTPS (client only)
DNS
FTP/SFTP
LDAP (Type R only)
IPv4

Security:

Hash: SHA-256 and higher

Virtualization:

Not supported

Supported Devices:

General Support:

- Networked Ricoh MFP and Laser Printers introduced in 2005 and later
- Networked Ricoh Geljet and GDI controller devices
- Networked standard MIB devices

Enhanced Support:

- Services-led platform networked Ricoh devices introduced in 2012 and later



Insight Systems Ltd
w: www.insightssystem.com
e: sales@insightssystem.com
t: 01732 880600

RICOH
www.ricoh-usa.com

Ricoh Americas Corporation, Five Dedrick Place, West Caldwell, NJ 07006
Ricoh® and the Ricoh logo are registered trademarks of Ricoh Company, Ltd. All other trademarks are the property of their respective owners. The content of this document, and the appearance, features and specifications of Ricoh products and services are subject to change from time to time without notice. Products are shown with optional features. While care has been taken to ensure the accuracy of this information, Ricoh makes no representation or warranties about the accuracy, completeness or adequacy of the information contained herein, and shall not be liable for any errors or omissions in these materials. Actual results will vary depending upon use of the products and services, and the conditions and factors affecting performance. The only warranties for Ricoh products and services are as set forth in the express warranty statements accompanying them.

